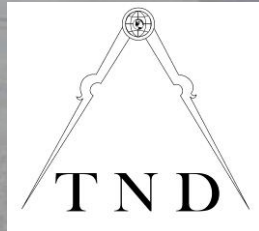


2022 Neighborhood Traffic Calming Program Traffic Commission Meeting April 13, 2022



Agenda

1. Program Overview
2. **2022 Pilot Projects**
 - Existing Conditions
 - Proposed Concept Designs
 - Q&A / Discussion
3. Next Steps

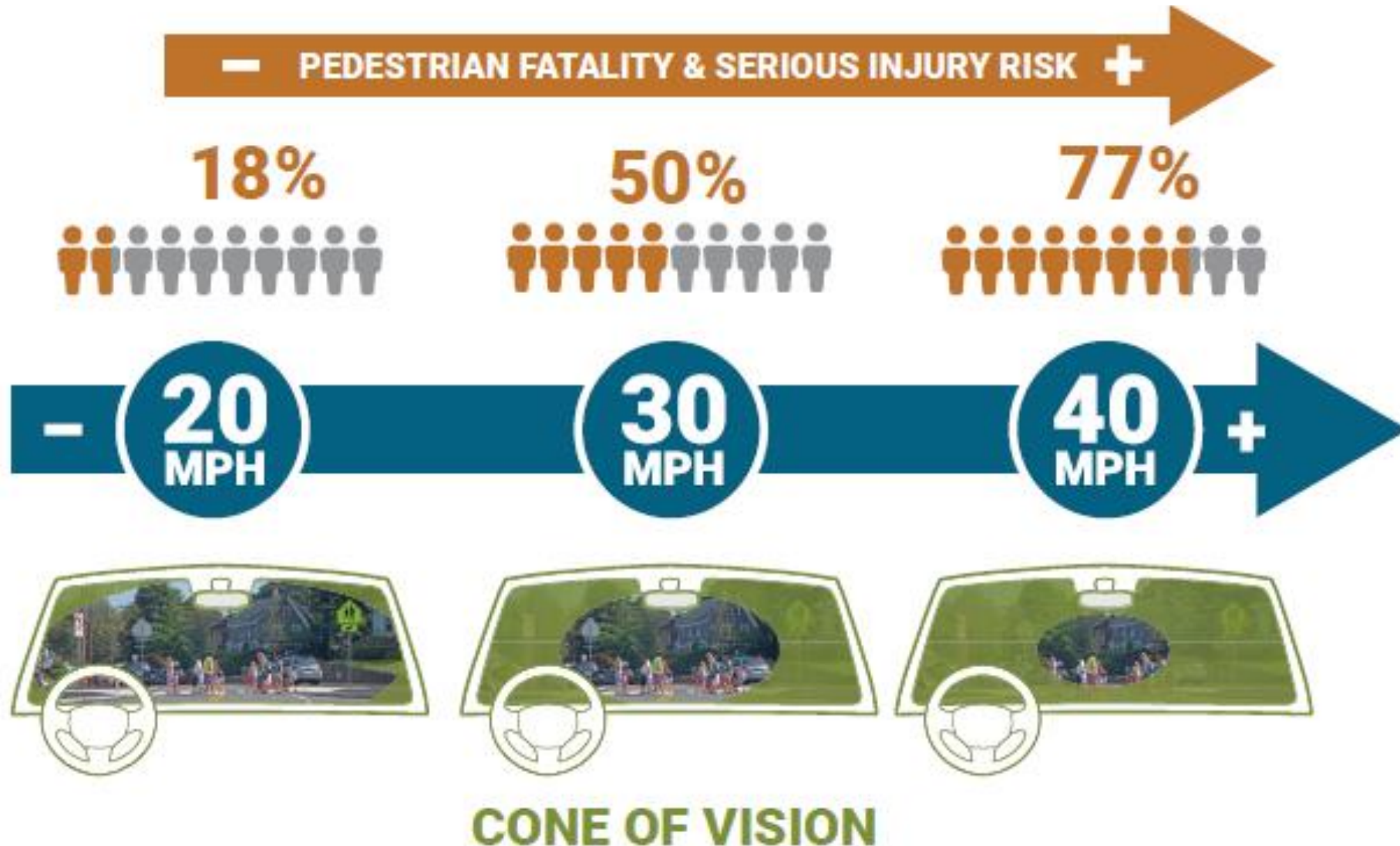


Program Overview

- Increase safety
- Slow and calm traffic
- Lower cost projects
- Test ideas and collect data
- Pilot to permanent changes
- Collaborative process
- Apply online



Slower Speeds Save Lives



Who is this for?



Program History

- 2011 Complete Streets Policy Adopted
- 2018 Neighborhood Traffic Calming Program Launch
- 2020 Shared Streets
- 2021 Traffic Calming Pilots
- 2022 Temporary And Permanent Installations



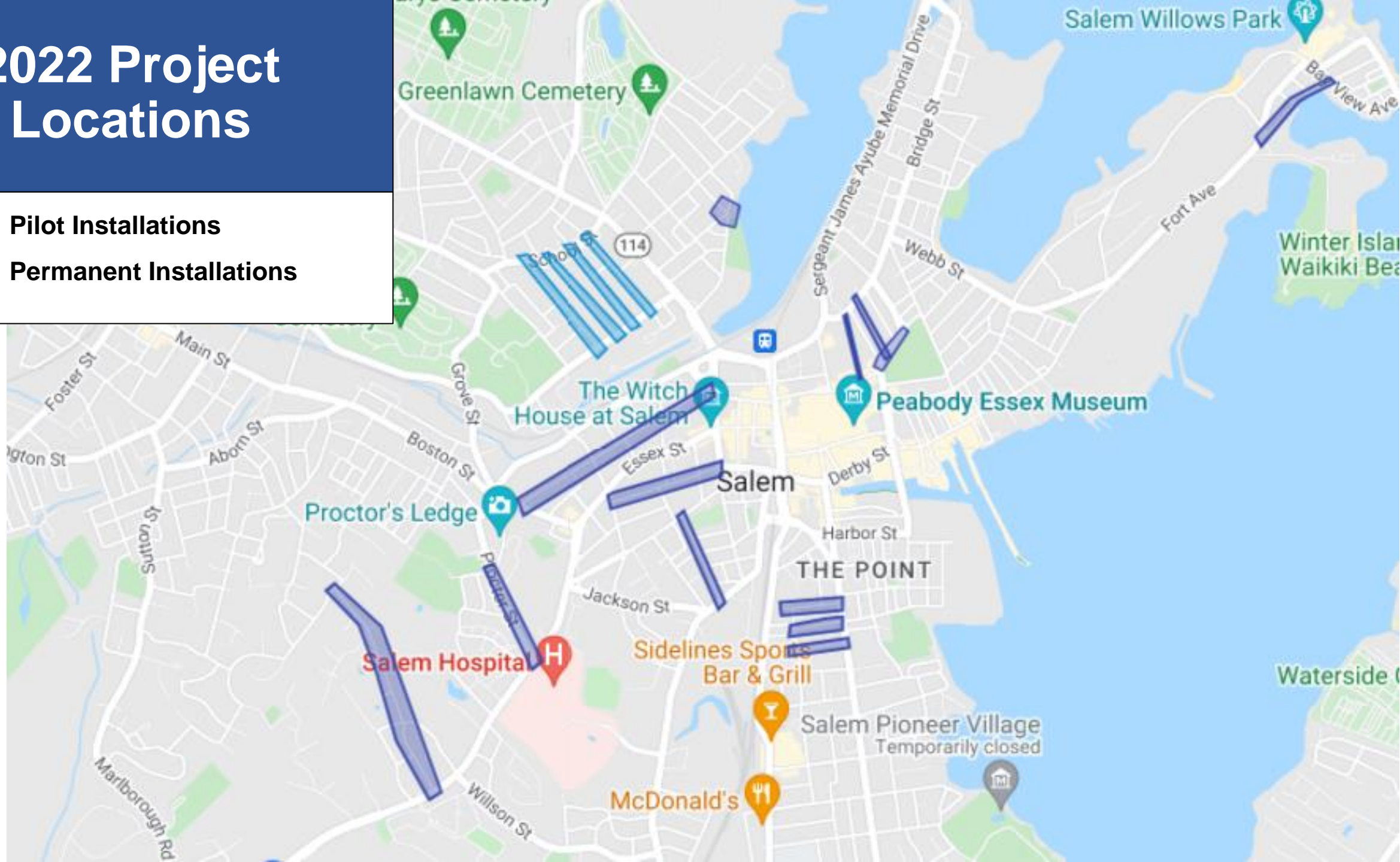
2022 Project Locations



Pilot Installations



Permanent Installations



Typical Tools



Gateway Treatment 20 mph Safety Zone Signs



Daylight Corners
20' from intersections
to increase visibility
(State Law)

Speed Humps

- Humps, not bumps
- Designed for 20 mph
- Spacing 200-300'
- Used on residential streets
- Rubber (pilot)
- Asphalt (permanent)
- Not ideal for emergency and bicycle routes



Speed Cushions

- Similar to speed humps but with slots
- Ideal for emergency and bicycle routes
- Designed for 20mph



Curb Extensions and Neckdowns

- Bump out sidewalks
- Reduce crossing distances
- Neckdown mid-block
- Improves visibility
- Visually narrows roadway
- Provides space for greenery and snow storage



Image Source: NACTO; Impact Recovery Systems

Chicanes

- Navigate S shape in road through curb extensions or alternating parking
- Creates friction along straightaways
- Provides space for greenery and snow storage



2022 Pilot Projects



2022 Pilot Projects

Pilot Seasonal Speed Humps and Cushion Installations

1. **Columbus Ave** - Fort Ave to Bay View Ave
2. **Proctor Street** - Mansell Parkway to Highland Ave
3. **Federal Street** - North Street to Boston Street
4. **Mall Street** - North Washington Square to Bridge Street
5. **Howard Street** - Brown Street to Bridge Street

Anticipated Timeline

Comment Period

- Through April 31st – Project Website and/or Email
- www.publicinput.com/salemtrafficalming

Final Design / Neighborhood Coordination

- Spring 2022

Schedule Installation

- Late Spring / Early Summer 2022

Evaluation

- Summer / Fall 2022

Existing Conditions and Proposed Designs



Columbus Ave from Fort Ave to Bayview Ave



Columbus Ave Existing Conditions

Data Collected

Sept 2019, July 2021, Aug 2021

Street Type	Direction	Parking
Local	2-way	Both Sides

Posted Speed	Average	85th	High	% over limit
20mph	25mph	29mph	56mph	39%

Average Daily Traffic (ADT)	Peak Hours
876	7-8am, 11-12pm, 4-6pm



Columbus Ave Proposed Design

Design Overview

- Series of 4 Humps
- No parking impacts
- People park on humps

3.5'- 4'

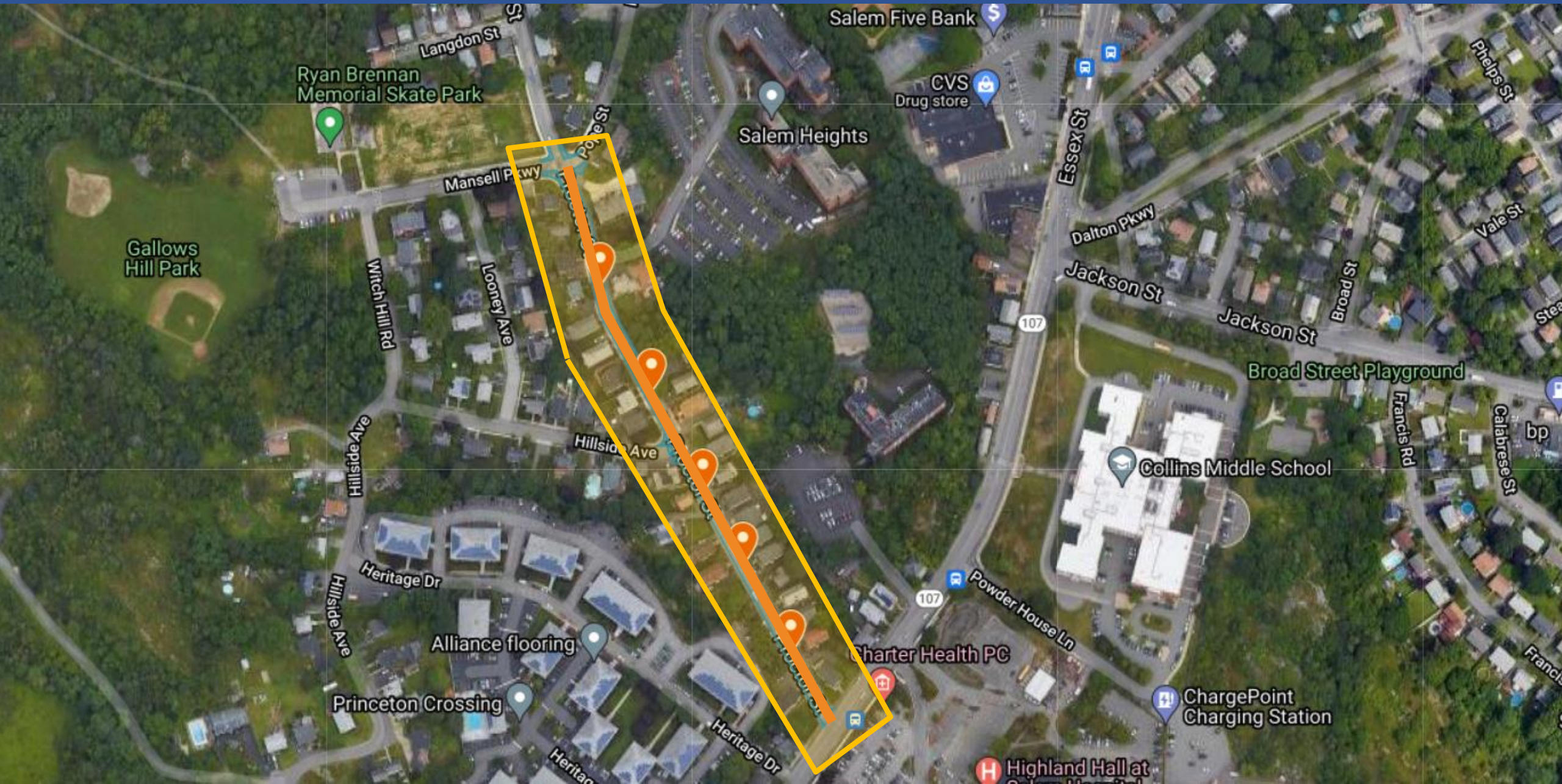
22.5'

3.5'- 4'

30' to 30.5' typ

See Plans

Proctor St from Mansell Pkwy to Highland Ave



Proctor St Existing Conditions

Data Collected

July 2020

Street Type	Direction	Parking
Collector	2-way	East side only

Posted Speed	Average	85th	High	% over limit
25mph	26mph	29mph	63mph	50%

ADT	Peak Hours
3,780	11-12pm, 3-4pm



Proctor St Proposed Design

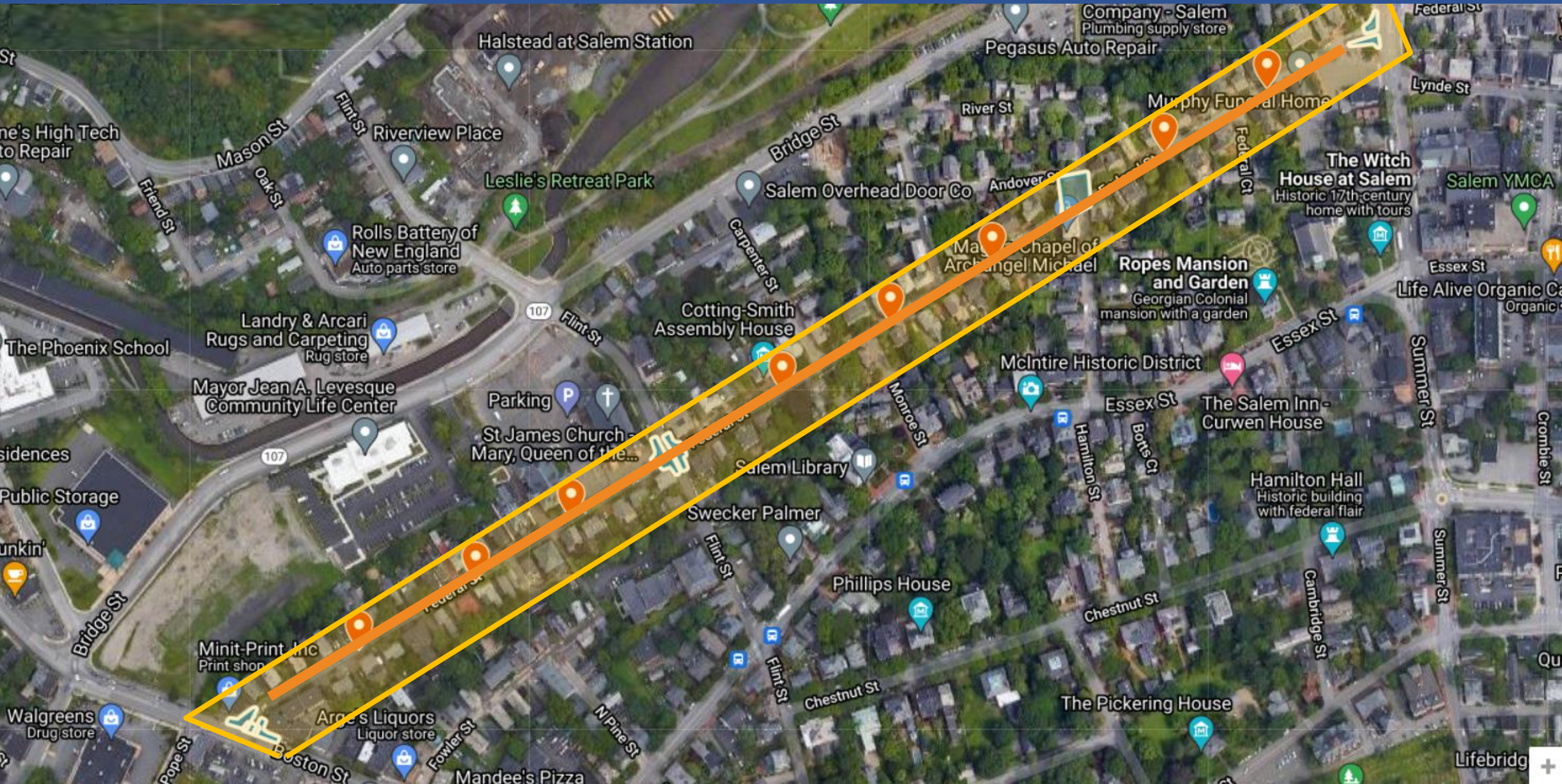
Design Overview

- Stripe parking lane and travel lanes
- Two speed cushions and flexposts per location



See Plans

Federal St from North St to Boston St (0.55 mi)



Federal St Existing Conditions

Data Collected

June 2021

Street Type	Direction	Parking
Local	1-way WB	1 side - chicanes

Posted Speed	Average	85th	High	% over limit
20mph	24mph	29mph	67mph	81%

Location	ADT	Peak Hrs
North of Flint	1,767	8-9am, 11-12pm, 4-5pm
South of Flint	575	7-8am, 4-5pm

24.5'-25' Typ.

Federal St Proposed Design

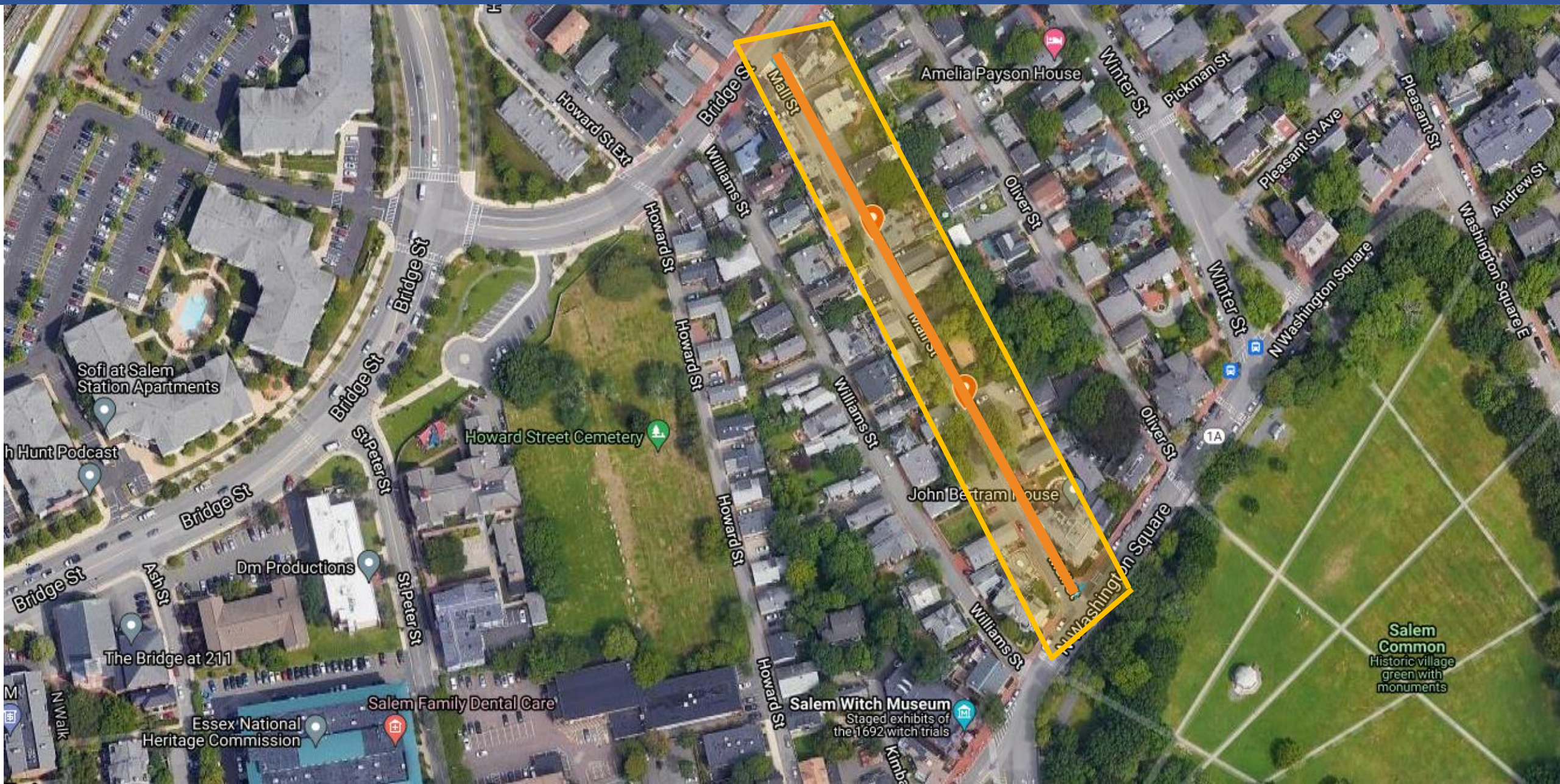
Design Overview

- Speed cushions centered in travel lane
- Flexposts at cushions
- Contraflow bike lane



See Plans

Mall St from N Wash Sq to Bridge St



Mall St Existing Conditions

Data Collected

March 2021

Street Type	Direction	Parking
Local	1-way NB	One - West Side

Posted Speed	Average	85th	High	% over limit
25mph	20mph	25mph	44mph	13%

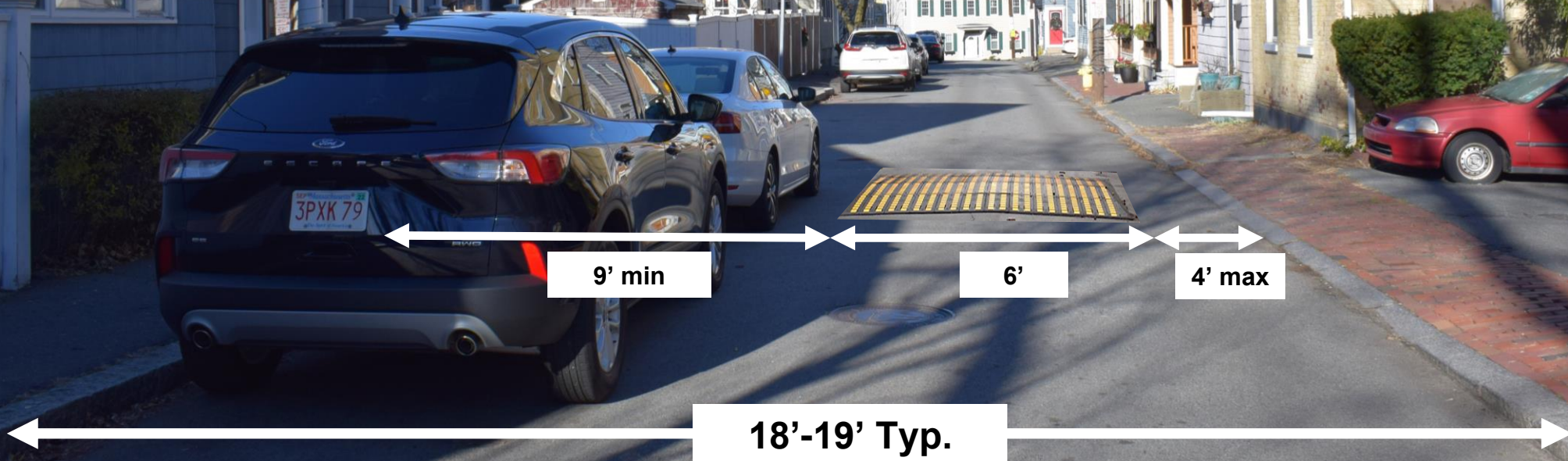
ADT	Peak Hrs
250	11-12pm, 2-3pm



Mall St Proposed Design

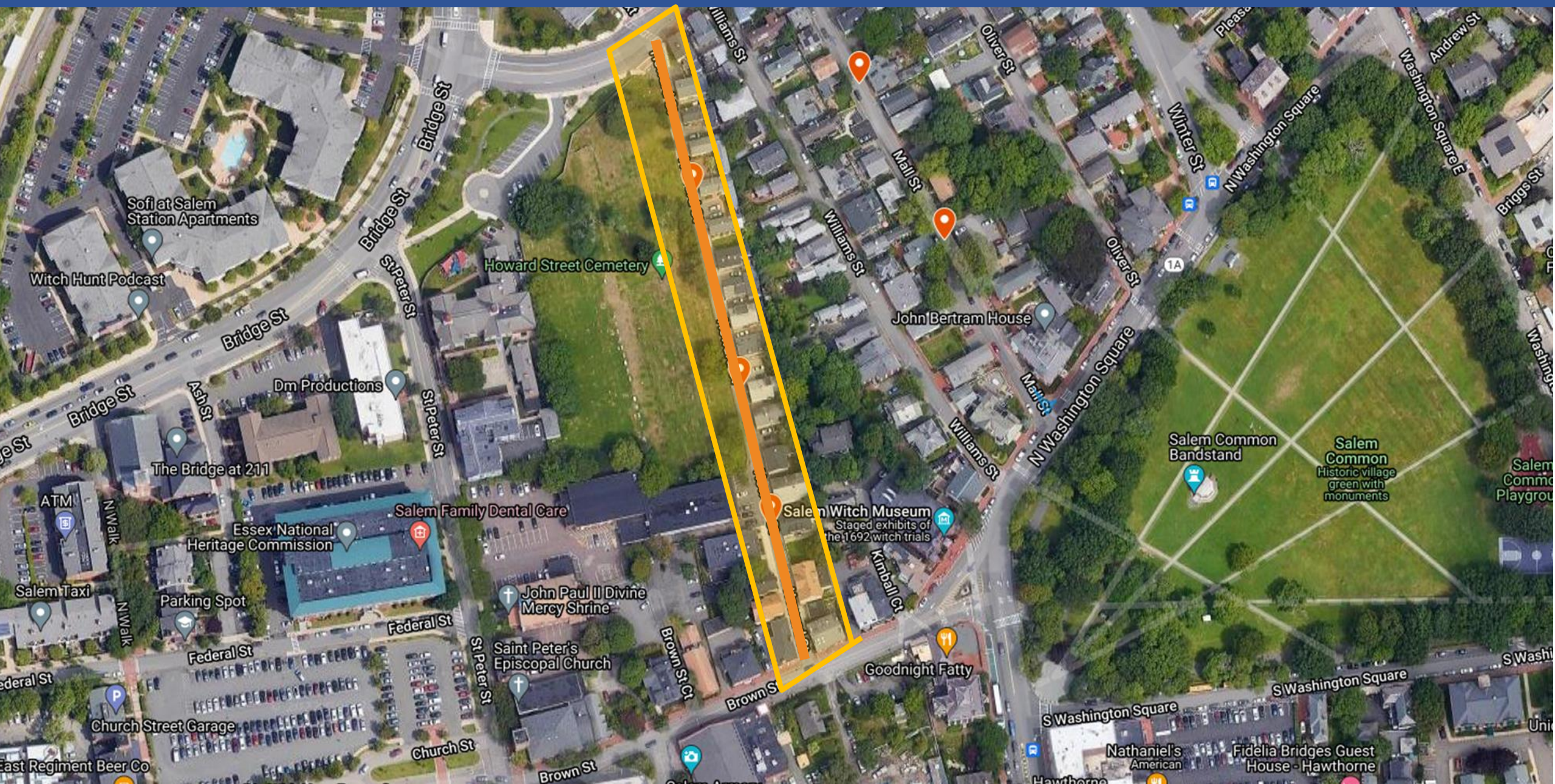
Design Overview

Speed cushions
centered in travel lane



See Plans

Howard St from Brown St to Bridge St



Howard St Existing Conditions

Data Collected

March 2021

Street Type	Direction	Parking
Local	1-way NB	Partial – East Side on SW

Posted Speed	Average	85th	High	% over limit
25mph	17mph	21mph	44mph	3%

ADT	Peak Hrs
148	7-8am, 4-5pm

Notes

- People walk, bike, and wheel in the street



Howard St Proposed Design

Design Overview

- Speed cushions centered in travel lane
- Painted shoulder at cushions



See Plans

Anticipated Timeline

Comment Period

- Through April 31st – Project Website and/or Email
- www.publicinput.com/salemtrafficalming

Final Design / Neighborhood Coordination

- Spring 2022

Schedule Installation

- Late Spring / Early Summer 2022

Evaluation

- Summer / Fall 2022

Questions / Discussion

Project Contacts

Christina Hodge

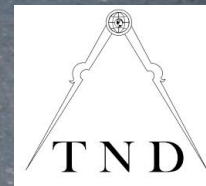
Asst. Director, Traffic & Parking
chodge@salem.com

Karl Alexander

Neighborways Design
karl@neighborways.com

Project Website

<https://publicinput.com/salemtrafficalming>



neighborwaysdesign